

PAPER NAME

**Analysis of health risks using geomedica
l mapping in landslide prone areas in Pon
orogo East Java.pdf**

AUTHOR

Sisca Mayang Phuspa

WORD COUNT

3534 Words

CHARACTER COUNT

18230 Characters

PAGE COUNT

9 Pages

FILE SIZE

585.9KB

SUBMISSION DATE

Aug 23, 2023 11:18 AM GMT+7

REPORT DATE

Aug 23, 2023 11:18 AM GMT+7

● **4% Overall Similarity**

The combined total of all matches, including overlapping sources, for each database.

- 0% Publications database
- 4% Submitted Works database
- Crossref Posted Content database

● **Excluded from Similarity Report**

- Internet database
- Bibliographic material
- Cited material
- Crossref database
- Quoted material
- Manually excluded sources

PAPER • OPEN ACCESS

Analysis of health risks using geomedical mapping in landslide prone areas in Ponorogo East Java

To cite this article: Sisca Mayang Phuspa and Dihin Muriyatmoko 2019 *J. Phys.: Conf. Ser.* **1175** 012223

2 [View the article online](#) for updates and enhancements.

You may also like

- 4 [Stability Testing for Android Radio Streaming Apps of Songgolangit FM](#)
Nur Aini Shofiya Asy'ari and Dihin Muriyatmoko
- [Risk analysis of landslide disaster in Ponorogo, East Java, Indonesia](#)
S Koesuma, A P Saido and Y Fukuda
- [Cooling times' dependence on the glassy NiTi at extremely low temperatures: a result from rapid solidification using molecular dynamics simulations](#)
Bagus Nurcahyo Alif Mahendra, Rizal Arifin, Muhammad Malyadi et al.

Analysis of health risks using geomedical mapping in landslide prone areas in Ponorogo East Java

Sisca Mayang Phuspa¹ and Dihin Muriyatmoko²

¹Department of Occupational Safety and Health, University of Darussalam Gontor

²Department of Informatics, University of Darussalam Gontor

¹siscamayang@unida.gontor.ac.id , ²dihin@unida.gontor.ac.id

Abstract. Ponorogo Regency is an area prone to landslides, as happened on April 1, 2017, which had impacted 28 fatalities, declining public health status, and losses in the economic sector to hundreds of millions of rupiah. This research is a preventive step that aims to analyze the public health risks by geomedical mapping covering 21 sub-districts prone to landslide disasters in Ponorogo Regency. Geomedical mapping is an utilization of Geographic Information Systems (GIS) on disaster mitigation. Health risk analysis is carried out by weighting and scoring methods on variables from the hazard, vulnerabilities, and capacities to obtain the level of risk for each sub-district. The results show that 28.6% of all sub-districts in Ponorogo Regency have a high potential for landslide disasters while 71.4% are potentially moderate. The vulnerability of the community to landslide disasters varies from low (33%), moderate (43%) to high (24%). The capacity of communities facing landslides shows that 19% of all sub-districts are classified as medium and 81% others are low. Based on the identification of hazards, vulnerabilities, and capacities of communities in each sub-district in Ponorogo Regency, it was concluded that only 1 sub-district had a low risk of landslides, 2 sub-districts were at moderate risk, while 18 other sub-districts had a high health risk. The results of the analysis are described in spatial mapping with ArcGIS software. Hopefully, this output can be a reference in setting priority areas for reducing the risk of landslide disasters in Ponorogo Regency.

1. Introduction

Landslide is the 3rd highest frequency of disaster after floods and tornadoes in Indonesia [1]. Ponorogo Regency is one of the regions that has the potential of landslides. Landslides have occurred on April 1st, 2017 in the village of Banaran, Ponorogo which had impacted 28 fatalities, various health problems, and losses in the economic sector to hundreds of millions of rupiah due to land masses hoarding settlements and plantations to 15 hectares area [2].

Landslide is mass movements consisting of soil and rocks from the top of the slope along the sloping plane due to gravity. Generally, landslides are caused by a combination of precondition factors, preparatory factors and trigger factors [3]. Precondition factor is a static factor affecting the limit of slope stability. Preparatory factor is a dynamic factor that changes the stable boundary of the slope. While triggering factor is a variable that directly causes slope failure (landslide).

Indonesia has numerous of landslides because of high rainfall, rock conditions, soil thickness, the impermeable layer (sloping area) of the soil mass and slopes of more than 30° [4]. Especially in Ponorogo, rainfall has become an adequate factor causing the potential for landslides [5]. High risk of



landslides is caused by the high vulnerability of the community [6]. Preventive efforts to minimize the risk of landslides are by mapping the potential hazards, vulnerabilities, and the capacity to face the disaster. This risk mapping is a GIS implementation in disaster mitigation [5]. Mapping is very helpful in improving data visualization and has been widely used by health professionals for planning, monitoring and surveillance [7].

The concept of geomedical mapping is linking the influence of environmental factors and health problems in humans and animals [8]. Specific geographical conditions provide strong information that health professionals can use to monitor public health. Geomedical mapping is prepared to support the implementation of the Integrated Emergency Management System [9]. Geomedical mapping is the result of an analysis based on identification of hazards, vulnerability and capacity to face the threat of disasters.

Geomedical mapping needs to be carried out in the area of Ponorogo Regency because an area that has experienced landslides can be projected to have a landslide again. This is called landslide vulnerability. Landslide vulnerability is a classification, volume and spatial distribution which has the potential to recur [10]. Therefore, this study has the aim to analyze the health risks by geomedic mapping in areas prone to landslide in Ponorogo Regency.

2. Methods

The study was conducted on 21 sub-districts in Ponorogo Regency. Semi-quantitative approach was carried out with descriptive analytic design to provide a systematic, factual and accurate description of health risks and determine the relationship of hazards, vulnerability and capacity to landslide disasters. Health risks analysis to landslide disaster refers to the model below:

$$\text{Risk} = (\text{hazards} \times \text{vulnerability}) / \text{capacity} \quad (1)$$

The model of risk assessment above uses weighting factors and indexing, not a real (numerical) values. The indexation of each variable above consist of: (a) the hazard is calculated based on the probability of occurrence and magnitude of the disaster; (b) vulnerability is assessed based on population density, vulnerable groups, and poverty ratio; (c) capacity is assessed based on Health human resources, focal points and health care facilities [11].

2.1. Research Variables

The dependent variable is health risk analysis of Ponorogo Regency, while the independent variable are hazards, vulnerability and capacity of the community to face landslides. Each index has parameters as described in the table 1.

Table 1. Research variables, parameter of classes, score, weight and index equation

Variables	Parameter of Classes	Score	Weight (%)	Index Equation
Identification of potential hazards to landslides				
Landslide disaster potential is based on analysis using Paimin formula [12]	High: total points ≥ 3.5	1	50%	(a) Hazard index = $(0.5 * \text{potential}) + (0.5 * \text{incidence})$
	Moderate: total points 2.6-3.4	0.667		
	Low: total points ≤ 2.5	0.333		
The number of landslides in Ponorogo Regency in 2015-2017 [13]	High: ≥ 21 events / year	1	50%	
	Moderate: 11-20 incidents / year	0.667		
	Low: ≤ 10 events / year	0.333		
Identification of the vulnerability of the community [14]				
Population density [15]	High: > 1000 people / km ²	1	40%	(b) Vulnerability index = $(0.4 * \text{density}) + (0.3 * \text{vulnerable group}) +$
	Moderate: 500-1000 people / km ²	0.667		
	Low: < 500 people / km ²			

		0.333	(0.3 * poverty ratio)
Vulnerable group [15]	High : > 40% of population	1	
	Moderate : 20-40% of population	0.667	30%
	Low : < 20% of population	0.333	
Poverty Ratio [15]	High : > 40% of population	1	
	Moderate : 20-40% of population	0.667	30%
	Low : < 20% of population	0.333	
Identification of community capacity to face landslide disasters [14]			
Adequacy of health human resources in accordance with SNI which refers to the Vision of Healthy Indonesia 2015:	High : over than National Standards	1	
a. 1 doctor for every 2500 population	Moderate : sufficient in National Standards	0.667	
b. 1 pharmacist for every 10,000 population	Low : deficient in National Standards	0.333	40%
c. 1. Midwives for every 1000 population			
d. 1 nurse for every 850 population			
The existing of focal point or disaster risk reduction community [9]	High : Exist and doing routine training	1	
	Moderate: Exist but not doing routine training	0.667	30%
	Low: Doesn't exist	0.333	
Health Service Facilities standardized refers to Healthy Indonesia Vision	High : Exist, standardized and adequate	1	
	Moderate : Exist, not standardized but adequate	0.667	30%
	Low : Exist, not standardized and not adequate	0.333	

$$(c) \text{ Capacity index} = (0.4 * \text{health HR}) + (0.3 * \text{Focal point}) + (0.3 * \text{health care facility})$$

2.2 Data Collection and Analysis Techniques

Primary data and secondary data are collected by interview, observation and literature study. Health risk analysis was carried out by compiling the variables based on the Guidelines for Disaster Risk Assessment of BNPB Regulation No. 2 of 2012 and the Geomedical Map Preparation Guidelines of Ministry of Health, 2005. Furthermore, health risks are analyzed by overlaying with ArcGIS devices in to risk maps.

3. Results and Discussion

3.1 Hazards Identification

The potential of hazards had identified by compiling potential variables based on the prediction results with the Paimin formula [12] and the incidence rate based on the Badan Nasional Penanggulangan Bencana (BNPB) District report of 2015-2017 [13]. Formula Paimin has parameters to predict the potential for landslides, namely: (a) cumulative rain for 3 days; (b) degree of slope; (c) geological conditions; (d) thickness of solum; (e) the existence of a fault; (f) land use, (g) infrastructure and (h) settlement factors [16], as formulated as follows.

$$\text{Total Score} = 0,25a + 0,10b + 0,10c + 0,05d + 0,05e + 0,20f + 0,15g + 0,05h \quad (2)$$

The results of hazards analysis in all sub-districts of Ponorogo shows that 6 sub-districts (Ngrayun, Slahung, Sawoo, Sooko, Pulung and Ngebel) have a high potential of landslide, while the other 15 sub-districts have a moderate potential. The mapping of hazards analysis in Ponorogo Regency is shown in Figure 1.

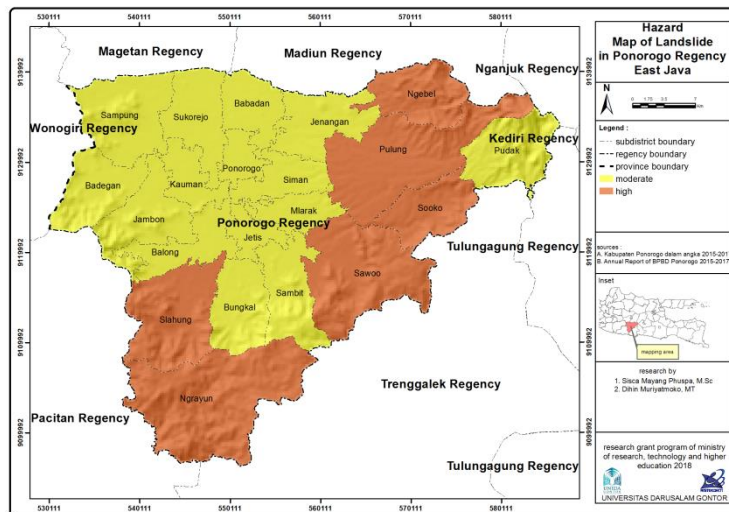


Figure 1. Hazard Map of Landslide in Ponorogo Regency

3.2 Vulnerability Identification

The level of vulnerability had identified by compiling variables of population density, the presence of vulnerable groups and the poverty ratio [14]. Population density become a vulnerability variable because the high population is directly proportional to the high probability of the population affected by disasters. People included to vulnerable groups are a priority to be helped by other because they are considered to be difficult to evacuate themselves when disaster happens [17]. The poverty ratio becomes a variable of vulnerability because poverty is related to the low level of health [7].

The results of the identification of vulnerability to landslide disasters in Ponorogo showed variations from low (7 sub-districts), moderate (9 sub-districts) to high (5 sub-districts). It can be concluded that the growth and distribution of the population in Ponorogo Regency is not equally. It should be taken into consideration in the regional development planning of Ponorogo Regency. The vulnerability mapping of Ponorogo Regency is shown in Figure 2.

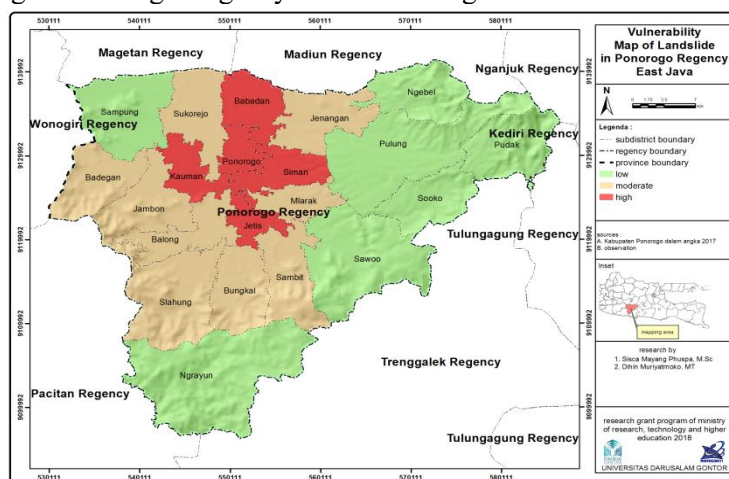


Figure 2. Vulnerability Map of Landslide Disaster in Ponorogo Regency

3.3 Capacity identification

The level of community capacity had identified by compiling the adequacy of health human resources, the existence of focal points and the adequacy health infrastructure [9]. Adequacy of health human resources greatly influences the capacity of the community to face disasters [18]. Adequacy of health human resources refers to the 2015 Healthy Indonesia Vision standards for achieving the Millennium Development Goals (MDGs). In addition to health human resources, the quality of health services should also be supported by adequate and certified facilities and infrastructure [19]. Another strength in dealing with disaster threats is the focal point which actively participates in disaster risk reduction in each region [20].

The results of the identification of community capacity to face landslides showed that only 4 sub-districts were classified as moderate while 17 other sub-districts were low. Community capacity mapping is shown in Figure 3.

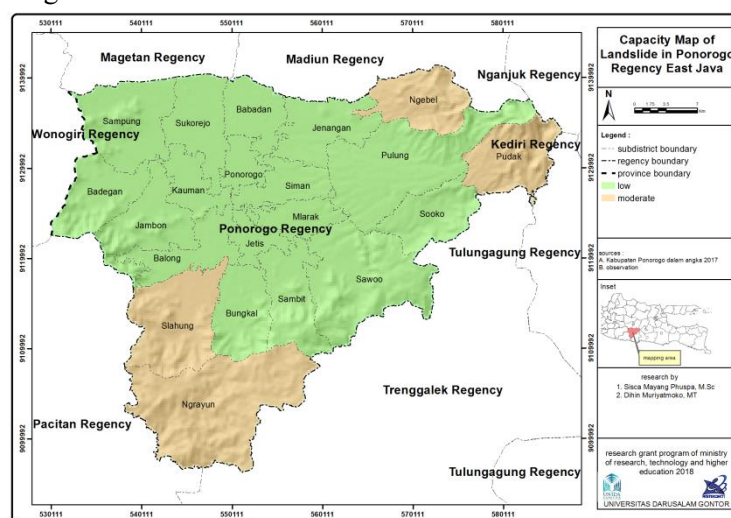


Figure 3. Capacity Map of Landslide in Ponorogo Regency

3.4 Health Risk Analysis

Analysis of health risks in each sub-district in Ponorogo Regency based on hazards, vulnerability and capacity as shown in table 2, concluded that only Sampung sub-district had low landslide risk, 3 sub-districts had moderate risk, while 17 other sub-districts had high health risks. Health risk mapping of landslides in Ponorogo Regency is shown in Figure 4.

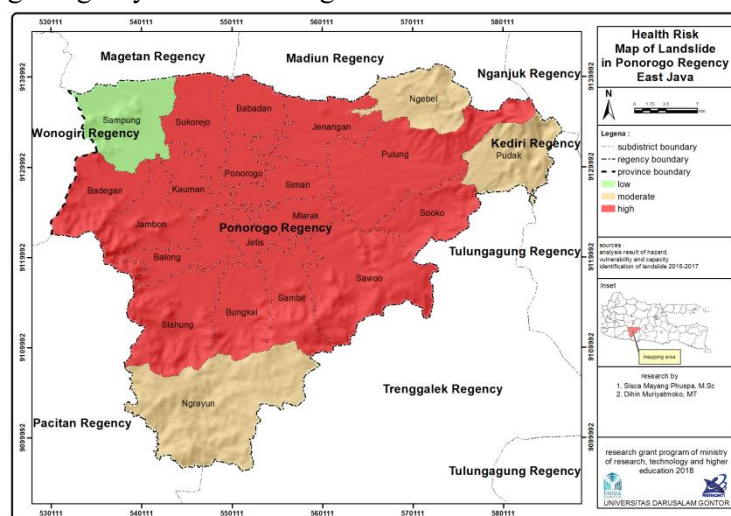


Figure 4. Health Risk Map of Landslide Ponorogo District

Table 2. The results of data collection and analysis in 21 sub-districts in Ponorogo Regency

Sub-districts	Prediction Score	Frequency Score	Hazard Index (a)	Density Score	Vulnerable group Score	Poverty Score	Vulnerability Index (b)	Health HR Score	Focal point Score	Health facility score	Capacity Score (c)	Risk = (a*b)/c	Risk Level
Ngrayun	1	1	1	0.333	0.333	0.333	0.333	0.667	0.333	0.667	0.5668	0.587509	Moderate
Slahung	1	0.667	0.8335	0.667	0.333	0.667	0.5668	0.667	0.333	0.667	0.5668	0.8335	High
Bungkal	0.667	0.333	0.5	0.667	0.333	0.667	0.5668	0.333	0.333	0.333	0.333	0.851051	High
Sambit	1	0.333	0.6665	0.667	0.667	0.333	0.5668	0.333	0.333	0.333	0.333	1	High
Sawoo	1	1	1	0.333	0.333	0.333	0.333	0.333	0.333	0.333	0.333	1	High
Sooko	1	1	1	0.333	0.333	0.333	0.333	0.333	0.333	0.333	0.333	1	High
Pudak	1	0.333	0.6665	0.333	0.333	0.333	0.333	0.667	0.333	0.667	0.5668	0.391575	Moderate
Pulung	1	0.667	0.8335	0.333	0.333	0.333	0.333	0.333	0.333	0.333	0.333	0.8335	High
Mlarak	1	0.333	0.6665	0.667	0.667	0.333	0.5668	0.333	0.333	0.333	0.333	1	High
Siman	0.667	0.333	0.5	1	0.667	0.667	0.8002	0.333	0.333	0.333	0.333	1	High
Jetis	0.667	0.333	0.5	1	0.667	0.667	0.8002	0.333	0.333	0.333	0.333	1	High
Balong	0.667	0.333	0.5	0.667	0.667	0.333	0.5668	0.333	0.333	0.333	0.333	0.851051	High
Kauman	0.667	0.333	0.5	1	1	0.667	0.9001	0.333	0.333	0.333	0.333	1	High
Jambon	0.667	0.333	0.5	0.667	1	0.333	0.6667	0.333	0.333	0.333	0.333	1	High
Badegan	0.667	0.333	0.5	0.667	0.667	0.667	0.667	0.333	0.333	0.333	0.333	1	High
Sampung	0.667	0.333	0.5	0.333	0.333	0.333	0.333	0.333	0.333	0.333	0.333	0.5	Low
Sukorejo	0.667	0.333	0.5	0.667	0.667	0.667	0.667	0.333	0.333	0.333	0.333	1	High
Ponorogo	0.667	0.333	0.5	1	1	0.333	0.7999	0.333	0.333	0.333	0.333	1	High
Babadan	0.667	0.333	0.5	1	1	0.667	0.9001	0.333	0.333	0.333	0.333	1	High
Jenangan	1	0.333	0.6665	0.667	1	0.667	0.7669	0.333	0.333	0.333	0.333	1	High
Ngebel	1	1	1	0.333	0.333	0.333	0.333	0.667	0.333	0.667	0.5668	0.587509	Moderate

Referred to table 2, proved that health risk level of landslide prone in Ponorogo regency have three sub-district area with moderate risk, one sub-district area with low risk, seventeen sub-district area with high risk. So, for the next step we can discuss that the geomedical mapping method is ably to applied for elsewhere area and to mapping risk analysis of landslide prone area, can used an others method like statistical based geospatial model [21] and spatial analysis of landslide inventory maps [22]

4. Conclusion

Geomedical mapping is an utilization of GIS in disaster mitigation. Geomedical mapping can be a method for analysing the risk of a health crisis due to a disaster. An important note as the results of this analysis is the extent high risk area for the threat of landslides. The low capacity of the community must be immediately addressed to reduce the potential risk of disasters due to landslides.

Acknowledgement

The research reported in this publication is supported by the Research Grant Program of the Republic of Indonesia Ministry of Technology and Higher Education in 2017. This content is entirely the responsibility of the author and does not always represent the official view of the Ministry of RI Technology and Higher Education.

References

- [1] Badan Nasional Penanggulangan Bencana, 2018, Data Pantauan Bencana, <http://geospasial.bnpb.go.id/pantauanbencana/data/datalongsorall.php>.
- [2] Suryatmojo H and Arigusantita, 2017, Bencana Longsor dan Aliran Debris di Banaran, Ponorogo – Konservasi DAS, <http://konservasidas.fkt.ugm.ac.id/>.
- [3] Hadmoko D S and dan Mauro S E D, 2012 *The Routledge Handbook of Hazards and Disaster Risk Reduction* London: Routledge.
- [4] Sudibyakto, 2011 *Manajemen Bencana di Indonesia ke mana?* Pertama Yogyakarta: Gadjah Mada University Press.
- [5] Muriyatmoko D and Phuspa S M, 2018 Analysis of Rainy Days and Rainfall to Landslide Occurrence using Logistic Regression *Ponorogo East Java. Geosfera Indones.* **3**, 2 p. 79–89.
- [6] Hadmoko D S Lavigne F Sartohadi J Hadi P and Winaryo, 2010 Landslide hazard and risk assessment and their application in risk management and landuse planning in eastern flank of Menoreh Mountains, Yogyakarta Province, Indonesia *Nat. Hazards* **54**, 3 p. 623–642.
- [7] Fisher R P Myers B and A., 2011 Free and Simple GIS as Appropriate for Health Mapping in A Low Resource Setting: A Case Study in Eastern Indonesia *Int. J. Health Geogr.*
- [8] Davenhall B, 2012 *Geomedicine Geography and Personal Health* August California.
- [9] Direktorat Federal Bina Pelayanan Medik, 2005 *Pedoman Penyusunan Peta Geomedik* Kedua Jakarta: Departemen Kesehatan RI.
- [10] Van Westen C J Alkema D Damen M C J Kerle N and Kingma N C, 2011 *Multihazard risk Assessment : Distance Education Course* .
- [11] Badan Nasional Penanggulangan Bencana, 2014 *Indeks Risiko Bencana Indonesia Tahun 2013 Pertama* Citeureup-Sentul: Direktorat Pengurangan Risiko Bencana Deputy Bidang Pencegahan dan Kesiapsiagaan.
- [12] Phuspa S M and Muriyatmoko D, 2018 Measurement Accuracy Of Paimin Formula To Landslide Prediction In Ponorogo East Java in *International Conference of Afro-Asian University Forum (AAUF) on The Role of Afro-Asian Universities in Building Civilization* p. 1063–1082.
- [13] Badan Penanggulangan Bencana Daerah Kabupaten Ponorogo, 2018, Laporan Data Kejadian Bencana Kabupaten Ponorogo Tahun 2015-2017.
- [14] Kepala Badan Nasional Penanggulangan Bencana, 2012 *Peraturan Kepala Badan Nasional Penanggulangan Bencana Pedoman Umum Pengkajian Risiko Bencana* Indonesia: Kepala

- Badan Nasional Penanggulangan Bencana, p. 67.
- [15] Badan Pusat Statistik Kabupaten Ponorogo, 2018 *Kabupaten Ponorogo Dalam Angka 2017* Ponorogo: CV. Azka Putra Pratama.
- [16] Paimin Sukresno and Pramono I B, 2009 *Teknik Mitigasi Banjir dan Tanah Longsor Balikpapan*: Tropenbos International Indonesia Programme.
- [17] Mei E T W *et al.*, 2013 Lessons learned from the 2010 evacuations at Merapi volcano *J. Volcanol. Geotherm. Res.* **261** p. 348–365.
- [18] Ansumana R *et al.*, Oct. 2010 Enabling methods for community health mapping in developing countries *Int. J. Health Geogr.* **9** p. 56.
- [19] González-Block M A Rouvier M Becerril V and Sesia P, 2011 Mapping of health system functions to strengthen priority programs. The case of maternal health in Mexico *BMC Public Health* **11**, 1 p. 164.
- [20] United Nation, 2009 *International Strategy for Disaster Reduction : Disaster Risk Reduction in the United Nations* Geneva.
- [21] Pradhan B Mansor S Pirasteh S and Buchroithner M F, Jul. 2011 Landslide hazard and risk analyses at a landslide prone catchment area using statistical based geospatial model *Int. J. Remote Sens.* **32**, 14 p. 4075–4087.
- [22] Fu K Lin B Thomas K and Chen C, 2016 Evaluation of Environmental Factors in Landslide Prone Areas of Central Taiwan using Spatial Analysis of Landslide Inventory Maps *Nat. Hazards Earth Syst. Sci.* April p. 1–54.

● **4% Overall Similarity**

Top sources found in the following databases:

- 0% Publications database
- 4% Submitted Works database
- Crossref Posted Content database

TOP SOURCES

The sources with the highest number of matches within the submission. Overlapping sources will not be displayed.

1	Far Eastern University on 2022-03-16 Submitted works	1%
2	University of Surrey on 2021-10-20 Submitted works	<1%
3	UIN Sunan Ampel Surabaya on 2020-06-25 Submitted works	<1%
4	Tilburg University on 2021-10-08 Submitted works	<1%
5	Universitas Islam Indonesia on 2021-08-04 Submitted works	<1%
6	Southern New Hampshire University - Continuing Education on 2022-0... Submitted works	<1%
7	University of Bristol on 2013-11-08 Submitted works	<1%

● Excluded from Similarity Report

- Internet database
- Bibliographic material
- Cited material
- Crossref database
- Quoted material
- Manually excluded sources

EXCLUDED SOURCES

Politeknik Negeri Bandung on 2019-09-24	9%
Submitted works	
Politeknik Negeri Bandung on 2019-09-04	9%
Submitted works	
Politeknik Negeri Bandung on 2019-09-04	9%
Submitted works	
Universitas Muhammadiyah Ponorogo on 2019-11-14	9%
Submitted works	
Forum Komunikasi Perpustakaan Perguruan Tinggi Kristen Indonesia (FKPPT...	9%
Submitted works	
Forum Komunikasi Perpustakaan Perguruan Tinggi Kristen Indonesia (FKPPT...	9%
Submitted works	
Universitas Negeri Padang on 2019-06-27	9%
Submitted works	
Politeknik Negeri Bandung on 2019-09-24	8%
Submitted works	
Politeknik Negeri Bandung on 2019-09-24	8%
Submitted works	

Universitas Mulawarman on 2023-02-23	7%
Submitted works	
Far Eastern University on 2022-03-27	6%
Submitted works	
University College London on 2020-01-14	4%
Submitted works	
Universitas Sebelas Maret on 2023-05-14	4%
Submitted works	
City University on 2019-12-18	4%
Submitted works	
Chulalongkorn University on 2018-04-10	3%
Submitted works	